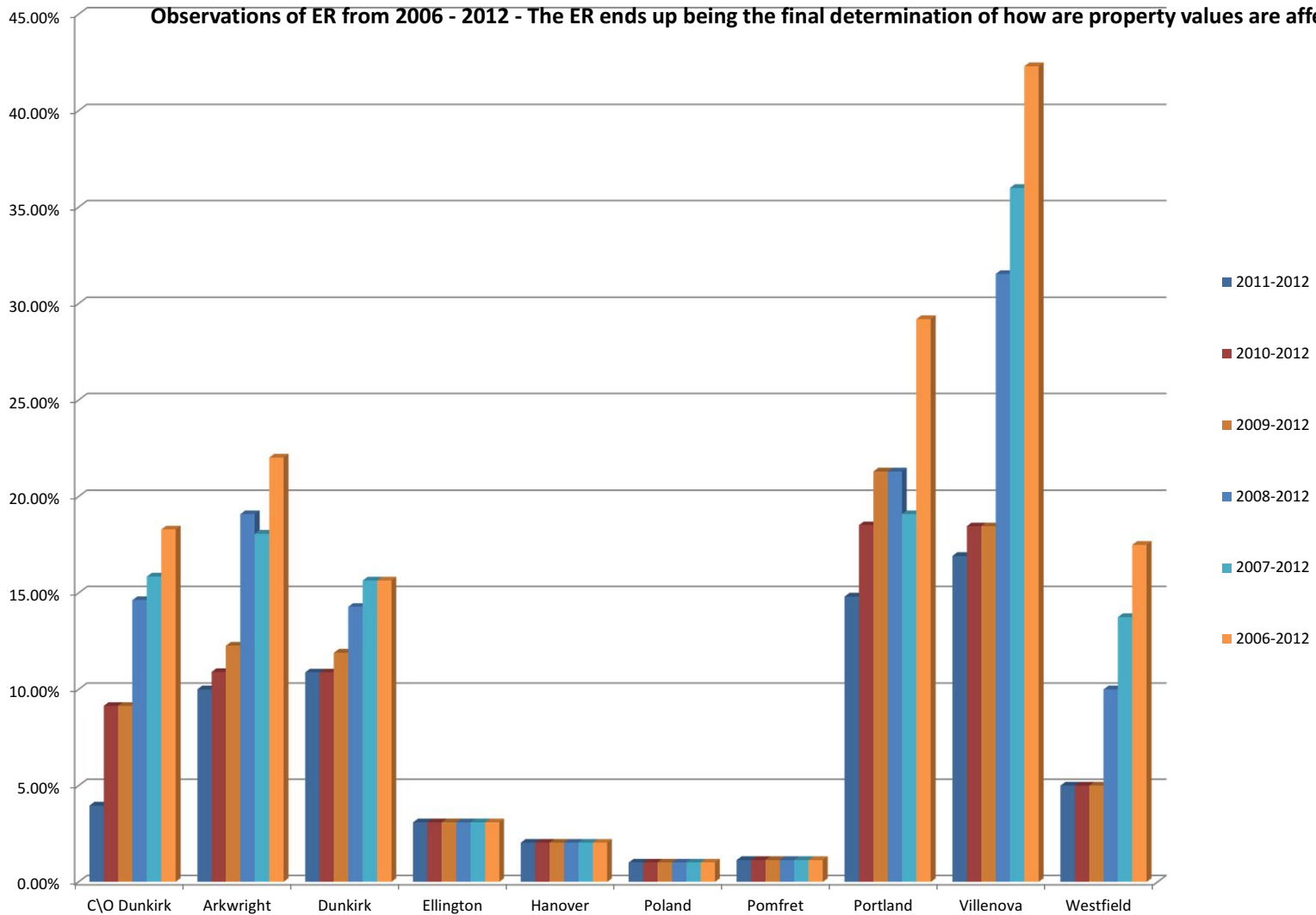


Equalization Rate change as a Percentage - Portland as compared to other towns in Chautauqua County

Observations of ER from 2006 - 2012 - The ER ends up being the final determination of how are property values are affected.



Observations of ER and RAR from 2006 - 2012 - The ER ends up being the final determination of how are property values are affected. These rates were downloaded from the NY state tax website.